



ROYAL NEW ZEALAND INSTITUTE OF HORTICULTURE

Newsletter

2011 No. 1, March
ISSN 1174-6947 (Print)
ISSN 1179-7444 (Online)

Chairman's Comments

The 2011 AGM will be the first under the revised constitution which will see nominated representation as well as elected positions on executive. I'm looking forward to seeing stronger linking of our mutual objectives based around the betterment of horticultural practice, recognition of the people who have strongly contributed to horticulture in New Zealand and recognising and valuing indigenous and exotic flora.

Along with many long established voluntary organisations the Institute continues to face an uphill battle in trying to increase our membership and remain viable. While discussion has continued over the last few years, and a major step forward occurred with restructuring of our constitution, the Institute still has some way to go to become sustainable for the long term. The new constitution should be seen as tool to move the Institute forward rather than just a means of governance. The executive will be putting more thought into this over the coming weeks as it prepares to report to the AGM and move into the new financial year.

Disappointingly we had no take up of the scholarships this year although we did receive two applications, which while worthy, did not meet the criteria stipulated in the available awards. However, we have had excellent and extremely deserving nominations for this year's honorary awards which will recognise long service to horticulture and/or excellence in endeavours associated with horticulture in New Zealand.

The Awards will be presented following the AGM in Blenheim which precedes the Banks Memorial Lecture, this year given by Lawrie Metcalf. The following day sees the commencement of the RNZIH New Zealand Gardens Trust conference 'Days of Wine and Roses'. Another great conference programme has been lined up sampling the best of Marlborough gardens and some special Marlborough wine!

The Proposed National Policy Statement on Indigenous Biodiversity is open for consultation at present. This will be an important tool which will give direction to the Resource Management Act (RMA). I urge you to read it and prepare a submission. It will encourage a better administration framework and national consistency in the application of the RMA.



The Young Horticulturist of the year is swinging into gear with the amenity sector finals in May 2011 alongside the New Zealand Recreation Association (NZRA) led amenity conference People, Parks & Plants. This conference is targeted at operational staff and managers and fills a long vacant gap in development opportunities throughout the public and private sectors. Contact Jude Rawcliffe (jude@nzrecreation.org.nz) for further information. I will be speaking on the New Zealand Plant Collection Register at a workshop session and there will be a presentation from the Notable Trees team. I will also be reminding those attending of the scholarship opportunities available through the RNZIH and reemphasising the value of the RNZIH administered awards.

Our thoughts remain with the people of Christchurch and those members of the Institute who have been affected by the earthquake. We hope that they are well and able to move forward towards at least some semblance of normality.

Hope to see you in Blenheim!

David Sole
Chairman, RNZIH

News and Events

Review of the National Pest Plant Accord list

The National Pest Plant Accord is a list of plants banned from sale, distribution and propagation of specified pest plants within New Zealand.

MAF are now formally starting the review of the National Pest Plant Accord list. The focus of this review is on considering applications to add species to or remove them from the list rather than a complete, independent review of all of the species currently on the Accord list.

Please see the following links to information on the process for adding to or removing species from the Accord:

- Overview of process for amending the NPPA list (www.biosecurity.govt.nz/pests-diseases/plants/accord/amending-list.htm)
- The webpage includes links to the application form (www.biosecurity.govt.nz/files/pests/plants/nppa/nppa-proposal-form.doc) and evaluation criteria (www.biosecurity.govt.nz/pests-diseases/plants/accord/tag-criteria.htm) to help guide applicants.

The submission period is open until 5.00 pm on Friday 29 April. Submissions should be sent to the NPPA Coordinator at nppa@maf.govt.nz. If you have any queries please contact the NPPA Coordinator (Katherine Garnett) on the NPPA email address.

People, Parks & Plants Conference

Following on from the success of the 2010 Cemetery and Crematoria specialist conference of the New Zealand Recreation Association (NZRA), and in cooperation with RNZIH and BGANZ members, NZRA brings you the 2011 People, Parks & Plants Conference.

This event is targeted at those who work in (or on) areas such as destination tourism, specialist gardens and parks, and botanic gardens.

Venue: Te Papa, Wellington.

Date: 18–20 May 2011.

Read further information, including the skeleton programme at www.nzrecreation.org.nz/Default.aspx?section=parks.

Jude Rawcliffe

Parks & Open Spaces Project Manager
NZ Recreation Association
jude@nzrecreation.org.nz
www.nzrecreation.org.nz

RNZIH National Office	Tanya Maylam PO Box 12, Lincoln University, Canterbury Phone: (03) 325 2811 Ext. 8670 Email: office@rnzih.org.nz Website: www.rnzih.org.nz
Patron	His Excellency, The Governor General of New Zealand, The Honourable Sir Anand Satyanand, GNZM, QSO
Vice Patrons	Ralph Ballinger OBE, AHRIH Beverley McConnell, QSM, AHRIH
President	Jack Hobbs AHRIH Auckland Regional Botanic Gardens 102 Hill Road, Manurewa, Auckland Phone: (09) 267 4728 Fax: (09) 266 3698 Email: HobbsJ@rnzih.org.nz
Vice President	Ross Ferguson, ONZM, FRSNZ, AHRIH Plant and Food Research, Private Bag 92 169, Auckland Mail Centre, Auckland 1142 Phone: (09) 846 8961 Fax: (09) 925 7001 Email: FergusonR@rnzih.org.nz
Chairman	David Sole FRIH Botanic Gardens of Wellington 101 Glenmore Street, Wellington Phone: (04) 803 8296 Cellphone: 021 227 8296 Fax: (04) 499 1903 Email: SoleD@rnzih.org.nz
National Executive	
Murray Dawson FRIH (RNZIH Webmaster; Journal editor)	Landcare Research, PO Box 40, Lincoln, Canterbury Phone: (03) 321 9645 Fax: (03) 325 2418 Email: DawsonM@rnzih.org.nz
David Glenn (Chairman, Notable Trees Trust)	New Zealand Horticulture Industry Training Organisation, PO Box 8050, Dunedin Phone: (03) 455 7550 Cellphone: 029 200 9242 Fax: (03) 455 1520 Email: GlennD@rnzih.org.nz
Mick Reece FRIH (Chairman, NZ Gardens Trust)	Dunedin City Council, 21 Montague St, North East Valley, Dunedin Phone: (03) 474 3569 Email: ReeceM@rnzih.org.nz
Eddie Wullems (Treasurer; HITO contact and Education Trust member)	Hamilton City Council, Private Bag 3010, Hamilton Phone: (07) 838 6934 Cellphone: 021 790 203 Fax: (07) 838 6935 Email: WullemsE@rnzih.org.nz

New Members

We warmly welcome the following new members who joined the RNZIH since December 2011:

Juancho Ibanez PHILIPPINES
Mr and Mrs Wakeling HAMILTON

News and Events

Public Meeting about Sydenham Botanical Park, Tauranga

On behalf of the Tauranga Environment Centre I would like to extend an invitation to attend a very important Public Meeting about how Tauranga City Council intends to divest its interest and involvement in Sydenham Botanical Park. This is very important and we need to encourage the Council to retain their involvement, so it will be great to see as many people there as possible. Tauranga City Council will consult on this option as part of their Annual Plan 2011/12; submissions open on 21st March 2011 and close on 20th April.

The public meeting is arranged to inform the public about Sydenham's Estate and facilitate discussion on Council's on-going involvement. Please contact me for more details.

Venue: Brookfield Primary School Hall, 20 Millers Road, Brookfield

Date: Wednesday 30th March 2011

Time: 7.00 pm

Katrina O'Connor

Tauranga Environment Centre

tgaec.waste@xtra.co.nz

www.tgaenvcentre.org.nz

Congratulations

2011 RNZIH Awardees

Our congratulations to the very deserving recipients of this year's RNZIH honorary awards. The awardees are:

Bee Dawson: Award in Garden History.

Graeme Platt: Plant Raisers' Award.

Julian Matthews and John Wills: Associates of Honour of the RNZIH (AHRIH).

Their full award citations will be published in the next edition of our journal (*New Zealand Garden Journal*, Vol. 14, No. 1, June 2011).

Dr Brian Molloy has been elected a Companion of the Royal Society.

The Council of the Royal Society of New Zealand has elected a strong advocate of native plant conservation, botanist Dr Brian Molloy ONZM, as a Companion. The President of the Royal Society of New Zealand, Dr Garth Carnaby, said the election of Brian was formal acknowledgement of the outstanding service he has given to botany and ecology in New Zealand and his willingness to share his knowledge. "Brian is held in high esteem both in New Zealand and internationally for his contributions to understanding our native plants and their conservation. He has shared his knowledge and expertise with many people, actively engaging in a number of botanical societies over a very long period of time. Brian has a particularly high reputation in the farming community for his work with landowners to better manage vegetation of national significance. His career exemplifies true public service."

Brian began his career as a research scientist in agriculture later specialising in the conservation and ecology of native plants. Although long "retired", he continues to work as a botanical and conservation consultant and as a research associate with Landcare Research. In recognition of his stature, he has had two native plants named after him, the Cook Strait kowhai (*Sophora molloyi*) in 2001 and the leafless orchid (*Molloybas cryptanthus*) in 2002.

Brian has served on the Riccarton Bush Trust for the past 36 years. He was a director of the Queen Elizabeth II National Trust from 1989 to 1998 and is currently a South Island field representative of the Trust. He was recipient of the New Zealand Plant Conservation Network's Lifetime Achievement Award in 2006. Brian was made an Associate of Honour of the RNZIH in 2007.

Dr Ross Ferguson will receive the honorary degree of Doctor of Science at Victoria University of Wellington's December 2011 Graduation.

This Honorary Doctorate recognises Ross as a champion of our kiwifruit industry. Quoting Victoria University's press release, he is the international authority on kiwifruit biology and an ambassador for New Zealand science. Projects under his leadership have been fundamental to New Zealand's kiwifruit breeding programme and to the expansion of kiwifruit to an international market.

In 1973, with kiwifruit emerging as an increasingly important crop for New Zealand, Ross began studying the fruit's biology. Much of this research was later included in the seminal work, *Kiwifruit: science and management*. Ross has authored or co-authored nearly 100 books and papers on the topic, and is regularly invited to address scientific conferences.

Professor Walsh of Victoria University says that Ross's efforts have been of huge importance to a very important industry for New Zealand. "Dr Ferguson is another example of the importance of scientific research to our export industries. As a major contributor to the success of the kiwifruit industry, he is a model for the way science and industry in partnership can be of enormous benefit to our economy."

Ross Ferguson graduated with a BSc (Hons) from Victoria University in 1965. He is a scientist with Plant & Food Research and is a Fellow of the Royal Society of New Zealand. In 1995 he received a New Zealand Research and Technology Medal, and in 2007 was made an Officer of the New Zealand Order of Merit for his contribution to the kiwifruit industry. In 2010 he was awarded the prestigious Jubilee Medal of the New Zealand Institute of Agricultural and Horticultural Science for his exceptional contribution to primary resource science over a sustained career.

In addition to these accolades, Ross is the Vice President and an Associate of Honour of the RNZIH.

RNZIH New Zealand Gardens Trust

Conference 2011 – "Days of Wine and Roses"

The 8th Annual RNZIH NZ Gardens Trust conference will be held in Blenheim 14–17 April 2011.

Conference speakers include:

Andrew Stone
Bee Dawson
George Pratt
Jane Hunter
Sir Miles Warren.

Gardens to be visited are:

MATUKU FARMS – the garden of Betty Manson
TUSSIX – the garden of Diane Sixtus
TIMARA LODGE - the garden of Bryan & Jan Johnson
LONDON HILL GARDENS – garden of Dennis & Barbara Burkhardt
WINTERHOME – the garden of Richard & Sue Macfarlane
BAREWOOD – the garden Joe & Carolyn Ferraby
HORTENSIA – the garden of Huguette Michel Fleurie
UPTON OAKS GARDEN – the garden of Dave & Sue Monahan
MORITAKI – the garden of Peter & Andrea Forrest
ROBINSON GARDEN – the garden of Geoff & Robin Robinson.

For further details contact Liz Morrow: morrowl@rnzih.org.nz or visit www.gardens.org.nz/events/

RNZIH Annual General Meeting

This year's Annual General Meeting will be held at the NZGT conference venue. The 2011 RNZIH Awards (see p. 3) will be presented following the AGM.

Venue: Marlborough Convention Centre, 42A Alfred Street, Blenheim.

Date: Thursday 14 April 2011.

Time: 5.00 pm.

Agenda:

1. Apologies/In Memoriam
2. Minutes of the 2010 AGM
3. Matters arising from the Minutes of the 2010 AGM
4. Chairman's Report
5. Statement of Accounts for 2010 and Budget for 2011
6. Branch Reports
7. Election of Officers, Patron, Vice Patrons, President, National Executive, Auditor and Hon. Solicitor
8. General Business:
 - Subscriptions
 - Notable Trees
 - Publications
 - NZ Gardens Trust
 - RNZIH Education Trust
 - Other.

Banks Memorial Lecture (a free public lecture):

A history of cultivars of New Zealand's indigenous plants and the influence of ERMA

By Lawrie Metcalf

The Banks Memorial Lecture is a *free* lecture open to the public.

It commemorates Sir Joseph Banks, botanist on Captain Cook's first voyage to New Zealand. During a later distinguished scientific career, he was Director of the Royal Botanic Gardens at Kew, London.

Venue: Marlborough Convention Centre, 42A Alfred Street, Blenheim.

Date: Thursday 14 April 2011.

Time: 6.00–7.30 pm.

Cost: Free.

Biography:

Lawrie Metcalf was appointed a Companion of the Queen's Service Order (QSO) in 2010 for "services to horticulture". He is recognised as New Zealand's most authoritative writer on the cultivation of our native plants with more than a dozen books to his credit. Possibly the best known is *The cultivation of New Zealand trees and shrubs* which was so successful that it has been republished several times. His books are well-researched and well written and illustrated by his own photographs and drawings.

Lawrie was Assistant Director of the Christchurch Botanic Garden for more than 20 years and then Director of Parks and Recreation in Invercargill but is now "retired" in Mapua, near Nelson. He has a particular interest in *Hebe* and is the International Registrar for cultivars of the genus and those of *Coprosma*, *Leptospermum*, *Phormium* and *Pittosporum*.

His many achievements have received recognition. He is an Associate of Honour of the RNZIH, an honour restricted to those who have rendered distinguished service to horticulture in New Zealand. He was awarded the Loder Cup, which is presented to "encourage and honour New Zealanders who work to investigate, promote, retain and cherish our indigenous flora".



Lawrie Metcalf at Mt Arthur, Nelson. Photo: Melanie Kinsey.

He has also received international recognition by being awarded the Veitch Memorial Gold Medal by the Royal Horticultural Society (UK) in 1991, a medal awarded to “persons of any nationality who have made an outstanding contribution to the advancement and improvement of the science and practice of horticulture”. He is one of the very few New Zealanders to have received this prestigious medal, the highest honour that the Royal Horticultural Society awards to people outside the UK.

Lawrie Metcalf has done more than probably anyone else to encourage New Zealand gardeners to use our native plants. He is a distinguished horticulturist, writer and conservationist.

RNZIH Education Trust

Nicola Rochester is the new Chair of the RNZIH Education Trust, taking over from past Chair Andrew Maloy. Nicola is New Zealand manager for ScottsMiracle-Gro (the company that makes Osmocote) and has been a great contributor to the Trust since she came on board. She also represents the Nursery and Garden Industry Association (NGIA) on the Horticulture Industry Training Organisation (HITO) board.

George Tregidga has agreed to take on the role of Vice Chair. George was originally appointed to the board of the Education Trust in 2008 (for his profile, see the *RNZIH Newsletter*, April 2008, No. 1, online at www.rnzih.org.nz/Newsletter/Newsletter_April_2008.pdf).

The Young Horticulturist of the Year 2011 competition

Partnered by AGMARDT, Fruitfed Supplies, Turners & Growers, NZ Horticulture ITO.

The RNZIH Education Trust in conjunction with partnering sponsors, AGMARDT, Fruitfed Supplies, Turners & Growers and NZ Horticulture ITO are proud to announce the launch of the 2011 Young Horticulturist of the Year competition.

The competition is open to people throughout the country who are 30 years of age or under and employed in the horticulture industry. Participants enter their sector competition and the winner goes forward to represent their sector at the Grand Final of the Young Horticulturist of the Year competition in November.

Sectors being represented this year include:

- NZ Arboriculture Association
- Fruit and Vegetable sectors of Horticulture NZ
- Landscaping NZ
- NZ Flower Growers, Florists NZ Incorporated
- Nursery and Garden Industry Association
- NZ Recreation Association – Amenity Horticulture
- NZ Winegrowers.

The main judges are Jack Hobbs, Auckland Botanic Gardens; Lesley Slade, a consultant on organisational and leadership development; and Errol Hewett, emeritus professor at Massey University.

This year's Grand Final will be held on 9th and 10th November in Auckland:

9th November consists of interviews with the main judges and presentations to support their written projects. Spectators are welcome to attend the presentations.

10th November is the practical activities day to be held at the Auckland Botanic Gardens. Spectators are welcome.

The competition offers a prize pool which includes further educational opportunities as its central focus.

Prizes for the overall winner include:

- Travel to the value of \$9,000 to further their knowledge and experience in horticulture overseas
- Scotts products to the value of \$2,500
- Fruitfed Supplies gift voucher to the value of \$1,000

- Yates NZ gift voucher to the value of \$550
- A one year *New Zealand Gardener* magazine subscription worth \$100
- A one year membership to the RNZIH which includes subscription to their journal worth \$75.

Prizes for the second placegetter include:

- Massey University study scholarship up the value of \$5,500
- An FMG travel scholarship to the value of \$2,000
- Fruitfed Supplies gift voucher \$750
- A Yates NZ gift voucher to the value of \$250
- One year magazine subscription to *New Zealand Gardener* magazine
- One year membership to the RNZIH.

Prizes for the third placegetter include:

- \$1,000 cash
- Fruitfed Supplies gift voucher \$500
- Yates NZ gift voucher \$250
- One year magazine subscription to *New Zealand Gardener* magazine
- One year membership to the RNZIH.

There are a number of other significant awards on offer for the 2011 competition, including:

AGMARDT Market Innovation Project

Finalists are required to prepare a 10 page marketing project in their own time over an 8-week period in the lead up to the Grand Final in November. Finalists then present their project to a panel of judges on the first day of the Grand Final, 9th November.

- 1st Prize: \$5,000
- 2nd Prize: \$2,500
- 3rd Prize: \$1,500
- \$500 consolation prizes for each completed project submitted by the due date.

The Turners & Growers Best Overall Practical Activities Award

The finalist who receives the highest overall score for the practical activities day at the Auckland Botanic Gardens will receive a \$5,000 travel scholarship.

The Bayer Best Practice Award

The finalist who receives the highest score in a range of activities with a focus on crop management and sustainability will receive a \$2,000 scholarship plus \$500 cash.

The NZ Horticulture ITO Best Overall Speech

The finalist who receives the highest score for their speech will receive \$500 cash.

The RNZIH Education Trust wishes to thank the following sponsors for making this event possible:

- **Partnering sponsors:** AGMARDT, Fruitfed Supplies, NZ Horticulture ITO, Turners & Growers
- **Supporting Sponsors:** Bayer, FMG, Massey University, *New Zealand Gardener* magazine
- **Affiliated Sponsors:** McConnell Trust, The Osmocote People, Treescape, Manukau Institute of Technology - School of Floristry, Yates NZ, Auckland Botanic Gardens, Cornwall Park Trust, Rainbow Park Nurseries.

The competition is managed by the RNZIH Education Trust who organises the event on behalf of the horticulture industry.

Elenka Nikoloff, YHOTY Competition Manager

RNZIH Notable Trees Trust

Notable Tree Notes

In each edition of the Newsletter we will feature a tree from the New Zealand Notable Trees Trust database. The idea is to highlight a specimen with outstanding attributes and/or an especially interesting history.

TNR/0749 – *Sequoiadendron giganteum* Wellingtonia

It's never too hard to find great trees with interesting stories behind them – they are, for those who look, all around us. A good example, for instance is the imposing 25 m high Wellingtonia – the Songer Tree – located on Signal Hill, a prominent ridge above the city of Nelson.

A Historic Places Trust sign beside the tree reads:

“The Songer Tree was planted in memory of Captain Arthur Wakefield. William Songer was invited by the Nelson City Council to assist at the planting. Songer provided a link back to the first signal staff on the site, having been present when the Union Jack was hoisted on 13 December 1841. The planting of the tree, donated by local nurseryman John Hale, was arranged for 25 July 1900. Due to a misunderstanding, 84-year-old William was late for the ceremony and was disappointed to find the tree had already been planted. This caused vigorous debate at the next council meeting. Councillor Baigent insisted that it had to be replanted because the inscription said that it had been planted under the direction of William Songer. His argument won the day, despite a warning from John Hale that the tree might not survive such treatment. On 20 August 1900 it was dug up and William Songer replanted it in a most workmanlike manner. Fortunately the tree flourished and, by a strange quirk, came to be known by the name of the man who planted it, rather than that of the man in whose memory it was planted”.

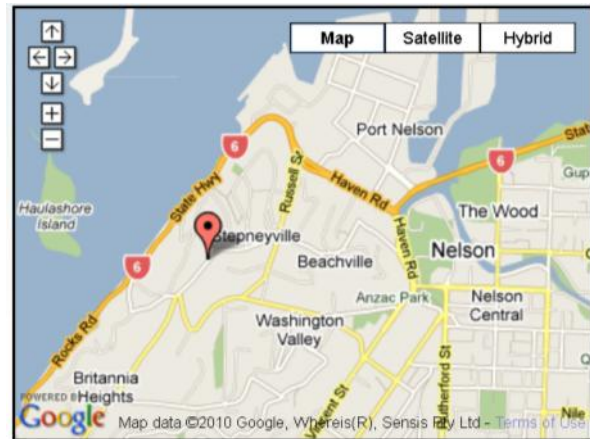
So there. Posterity sometimes, rightly or wrongly, records things in error – but it makes for a fascinating tale nonetheless.

This 110-year-old tree stands in the council road reserve alongside Britannia Heights – still in very good health despite the top dying of cypress canker in 1997. The top and other infected growth was removed – action which, thankfully, appears to have arrested further spread of the disease. With branches sweeping almost to the ground it makes an outstanding specimen.

Bryan Gould
Trustee, New Zealand Notable Trees Trust

Previously published in the NZAA Tree Matters, Edition 48, Summer 2010, Vol. 12, Issue 4.

The New Zealand Notable Trees Trust manages a free public database containing verified details of the most notable and significant trees in this country. The database is constantly being updated. New trees may be registered at any time – together with any contributions of information or support. View online at www.notabletrees.org.nz



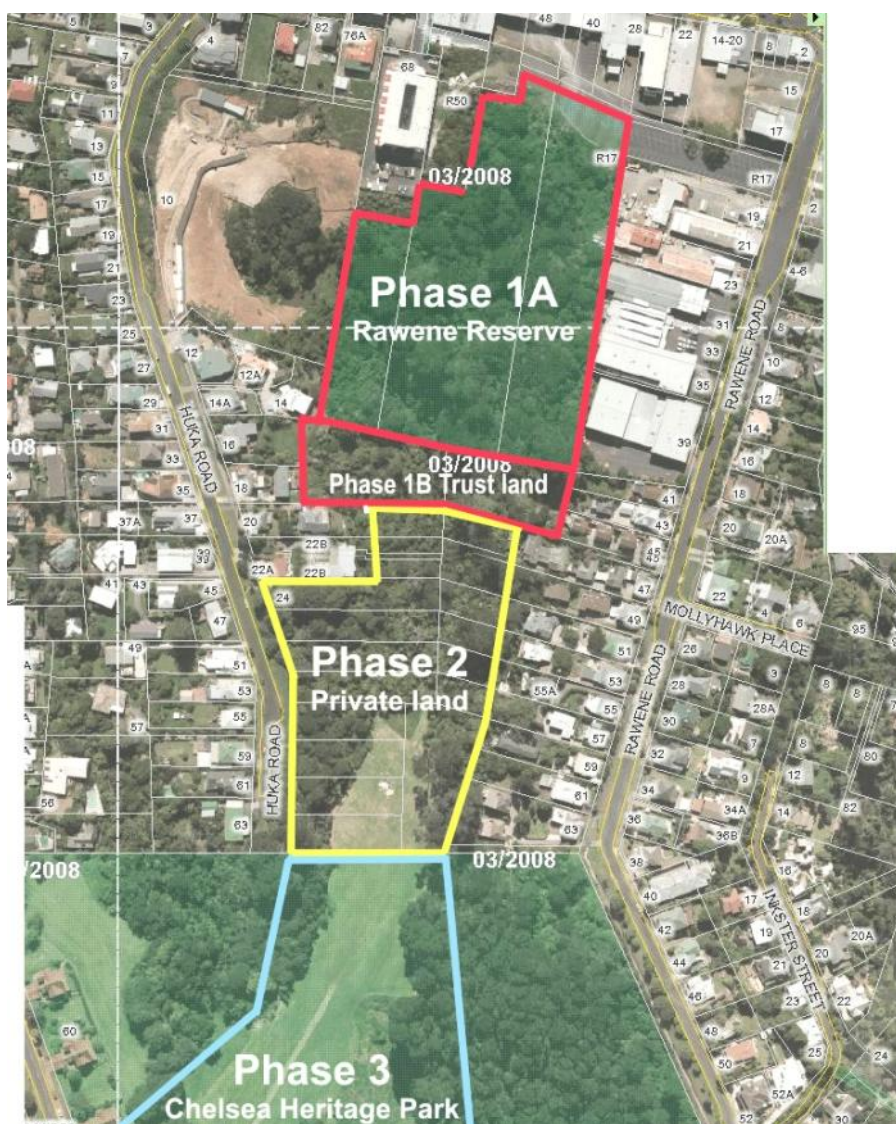
The Songer Tree. Photo: Brad Cadwallader.

The Great Chelsea Gardens

This is not about the Chelsea Show, and doesn't even relate to Chelsea, Great Britain. It's about creating a chain of themed gardens running from the Highbury Shopping Centre in Birkenhead down to the new Chelsea Heritage Park. The Heritage Park itself is on land recently acquired by the Chelsea Park Trust and the former North Shore City Council (now part of the Auckland Council), wrapping around the Sugar Refinery, connecting up three separate existing reserves, extending across the bottom of Huka Road over to Rawene Road, and taking in the Duck Creek ponds. The Great Chelsea Gardens is a further major development being sought by the new Great Chelsea Garden Charitable Trust. If it can be fully realised, there will be a succession of gardens celebrating different plant groups and different national styles, stretching down the valley from the Highbury Shopping Centre for more than a kilometre to reach the shore of Chelsea Bay. The dream is to create a garden complex that will, in time, be recognised as "*A garden of international significance*" by the New Zealand Gardens Trust, supported by the RNZIH. It is intended that funding will come in large part from sources apart from ratepayers.

The development is a long-held vision of one man, Graham Milne, a past North Shore City Councillor, company director, horticultural enthusiast and presently President of the Auckland Begonia Circle. Joining him on the Trust are Blake Twigden, known to many of us as an outstanding wildlife artist and creator of the Whitford Bird Garden; Dennis Scott, Landscape Architect and Fellow of the New Zealand Institute of Landscape Architecture; Graham Foster, an outstanding science teacher, active in Royal Society of New Zealand affairs and member of the Auckland Museum Institute Council; and myself. It's convenient to think of the development being done in three phases.

The first phase, the one we are concerned with right now, is to secure a lease of the wasteland known as Rawene Reserve (a polite name for a gulley which currently supports a jungle of privet, regenerating bush and a colony of feral cats) on peppercorn rental from the former North Shore City Council. The Council has given public notification of its intention to do so, and has received about 140 public submissions. Most of these are in favour, but a few are against. There should have been a public hearing on the submissions some time ago, but the reorganisation of Auckland's management meant inevitable delays. However the hearings are now scheduled for 11 April 2011, and we are hoping for a favourable outcome.



Phase 2 would involve a small area of land in private hands which is undeveloped, inaccessible and neglected lying between the two parks. Geotechnical issues mean that this land cannot be built on, but it's fine for creative gardening. Once Phase 1, the development of Rawene Reserve is well in hand, we would expect to be approaching the owners of this land with the proposition that they donate the unusable part of their sections to the Trust for use within the gardens or for creating an access corridor, to complete our link to the Chelsea Heritage Park. As part of this long term plan, the Trust has succeeded in obtaining the first and most significant of all the parcels of land required for Phase 2. If and when Phase 2 is achieved, we would be in a position to address Phase 3, seeking to collaborate with the managers of the Chelsea Estate Park to jointly develop the area around the ponds on Duck Creek as gardens. We would see the overall sweep of attractions, from ornamental gardens at the Rawene end to the great sweeps of partly-forested land of the Chelsea Heritage Park to the west, paralleling the synergy between the Auckland Botanic Gardens and Totara Park. Ultimately we would hope to see the development of amenities for visitors and facilities for education from early childhood right through to adults.

There is one thing the Great Chelsea Gardens will not be. It will not be any attempt to recreate the Auckland Botanic Gardens, partly because the two will draw their funding from different sources and will not be in financial competition. Instead, there will be a serious effort to make the two truly complementary, and to have regular communication in order to achieve that. In a phrase, the Great Chelsea Gardens will be the yin to the Botanic Gardens' yang. If we are to make any comparisons it will have greater similarities to the Hamilton Gardens, the Eden Gardens, and the Butchart Gardens of Victoria Island, Canada.

Rod Bielecki
