



# ROYAL NEW ZEALAND INSTITUTE OF HORTICULTURE

## Newsletter

2012 No. 1, March  
ISSN 1174-6947 (Print)  
ISSN 1179-7444 (Online)

## President's Comments

From across much of the country there are reports of the impact of the dismal summer (for most parts!) on the ripening and harvesting of crops from vegetables to grapes. Amenity horticulture has not been spared either with delayed flowering and fungal infestations wreaking havoc. The gardening columns still cheerfully and bravely offer advice on what to do each week! However that is the very essence of horticulture – sometimes it goes well and other times you just have to get on with it. No one is coming to the rescue.

Coming up is our Annual General Meeting to be held in Hamilton on Friday evening, 27 April 2012. See our newsletter for details.

The most exciting aspect of the AGM is the presentation of the Awards and the Banks Memorial Lecture.

The Banks Lecture this year is presented by Dr Marion MacKay who is going to speak of her book *Plants of Pukeiti Forest* which is a phenomenal record of her research of the Pukeiti Forest.

The awards this year all go to very deserving recipients some of whom are well known to many of us and others who have quietly 'got on with the job' to the benefit of horticulture in New Zealand and in turn to us all. I hope that you are able to join us to celebrate their recognition. Our awardees are also congratulated in this issue of the newsletter and their citations will be published in the next edition of our journal.

The impact of Governments' recent announcement to focus the purpose of local authorities on core services is cause for concern especially for amenity horticulture – an industry sector which has never truly recovered from the fractures caused by funder/provider splits and continues to struggle to maintain national coherence. How the new legislation will impact on public parks, gardens and reserves and how it defines services provided 'for the public good' remains unclear.



New Zealanders can ill afford to walk away from their environmental responsibilities in cities and regions or further neglect our community responsibilities to native and exotic biodiversity.

We still have places for three nominations for the executive this year. If you want to make a contribution to horticulture in New Zealand this is your opportunity! Even a small contribution can make a great difference.

I look forward to seeing you in Hamilton and perhaps you will stay on for the rest of the programme for the New Zealand Gardens Trust conference which has something for every garden owner, manager and enthusiast.

Best wishes.

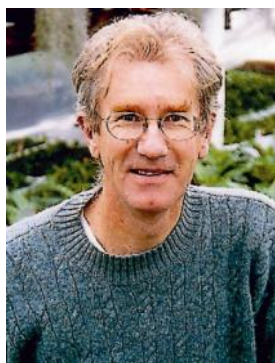
**David Sole**  
**President, RNZIH**

## RNZIH awardees

Congratulations to the 2012 RNZIH awardees – their awards will be presented following the AGM at the NZ Gardens Trust Conference venue. Their full citations are scheduled to be published in the June 2012 edition of our journal.

### Andrew Malloy

has become our newest Associate of Honour (AHRHNZ). Andrew is a bromeliad grower and breeder based in Auckland. He has served as Chairman of the RNZIH executive and the RNZIH Education Trust and provided long service in many areas of New Zealand horticulture.



### Kerei Thompson

has become a Fellow of the RNZIH (FRIH).

Kerei is based in Wellington and is Director of his award winning garden management company, Bark Ltd. Kerei became an assessor for the New Zealand Gardens Trust in 2005, went on to become a trustee in 2007, serving as Vice Chair for three years and becoming the NZGT Chairman in 2011.



### Alan Jellyman

has received the Garden History Award.

Alan lives in New Plymouth and recently authored *The growing world of Duncan and Davies*, a detailed history of what is arguably New Zealand's most important ever plant nursery.



### Jim Rumbal

of Waitara received the Plant Raisers' Award. Like Alan Jellyman, Jim was employed with Duncan and

<b>RNZIH National Office</b>	PO Box 12, Lincoln University, Canterbury Phone: (03) 325 2811 Ext. 8670 Email: <a href="mailto:office@rnzih.org.nz">office@rnzih.org.nz</a> Website: <a href="http://www.rnzih.org.nz">www.rnzih.org.nz</a>
<b>Patron</b>	Governor General of New Zealand Lt Gen Rt Hon Sir Jerry Mateparae
<b>Vice Patrons</b>	Ralph Ballinger OBE, AHRH

National Executive	
David Sole FRIH (RNZIH President)	Botanic Gardens of Wellington 101 Glenmore Street, Wellington Phone: (04) 803 8296 Mobile: 021 227 8296 Fax: (04) 499 1903 Email: <a href="mailto:soled@rnzih.org.nz">soled@rnzih.org.nz</a>
Murray Dawson FRIH (RNZIH Webmaster; Journal Editor)	Landcare Research, PO Box 40, Lincoln 7640, Canterbury Phone: (03) 321 9645 Fax: (03) 325 2418 Email: <a href="mailto:dawsonm@rnzih.org.nz">dawsonm@rnzih.org.nz</a>
Alex Gardiner (RNZIH Education Trust representative)	Comwall Park Trust Board PO Box 26-072, Epsom 1344, Auckland Mobile: 027 277 6058 Email: <a href="mailto:gardiner@rnzih.org.nz">gardiner@rnzih.org.nz</a>
David Glenn (RNZIH Notable Trees Trust representative)	New Zealand Horticulture Industry Training Organisation, PO Box 8050, Dunedin Phone: (03) 455 7550 Mobile: 029 200 9242 Fax: (03) 455 1520 Email: <a href="mailto:glennd@rnzih.org.nz">glennd@rnzih.org.nz</a>
Jeremy Hawker (BGANZ-NZ representative)	Christchurch Botanic Gardens, Christchurch City Council, PO Box 237, Christchurch 8140 Phone: (03) 941 7580 Email: <a href="mailto:hawkerj@rnzih.org.nz">hawkerj@rnzih.org.nz</a>
Mick Reece FRIH (RNZIH NZ Gardens Trust representative)	Dunedin City Council, 21 Montague St, North East Valley, Dunedin Phone: (03) 474 3569 Email: <a href="mailto:reecem@rnzih.org.nz">reecem@rnzih.org.nz</a>
Eddie Wullems (RNZIH Treasurer)	Hamilton City Council, Private Bag 3010, Hamilton Phone: (07) 838 6934 Mobile: 021 790 203 Fax: (07) 838 6935 Email: <a href="mailto:wullemse@rnzih.org.nz">wullemse@rnzih.org.nz</a>

Davies Nurseries, and is the longest serving former staff member.

During his time with the research division of D&D (from since 1984 to his retirement in 2004) Jim had a close association with the development and production of many new plants.



---

## Congratulations

---

**Dr Keith Hammett** was interviewed on his work breeding dahlias and other ornamental plants.

An interesting article based on this interview was published in the *New Zealand Listener*, February 27, 2012 (and online at [www.listener.co.nz/lifestyle/gardens/dahlias-a-breed-of-their-own/](http://www.listener.co.nz/lifestyle/gardens/dahlias-a-breed-of-their-own/)).

**Lawrie Metcalf** has recently published an all-new, fully revised edition of his iconic *The cultivation of New Zealand Trees and Shrubs*.

This book remains the most comprehensive and authoritative reference available on cultivars of New Zealand's native trees and shrubs.



---

## About BGANZ: Botanic Gardens Australia and New Zealand

---

BGANZ is made up of Botanic Gardens within Australia and New Zealand. They promote activities of botanic gardens generally and enhancing the state of botanic gardens for the advantage of the community.

The aims of BGANZ include:

- providing a forum for information exchange and coordinated planning
- fostering best-practice standards amongst Australian and New Zealand botanic gardens and other botanic gardens internationally
- being an advocate for the interests of Australian and New Zealand botanic gardens
- providing policy and legislative advice affecting botanic gardens
- advocating plant conservation and fostering the plant sciences and social and cultural heritage programs
- building and maintaining links with relevant national and international bodies.



The New Zealand members have been meeting in a series of seminars, the most recent in Dunedin in September 2011. The program was based around our plant collections which included defining a collection, standards, record keeping and ongoing enhancements.

The next BGANZ-NZ seminar is to be held on 25-26th of April in Hamilton and will precede the NZ Gardens Trust Conference. The theme for this seminar is design and includes the following areas:

- the design process
- designing for visitors
- practical design of the garden
- looking to the longer term.

Visit the BGANZ website at [www.bganz.org.au](http://www.bganz.org.au) for more information.

**Jeremy Hawker**  
RNZIH BGANZ-NZ representative

---

## RNZIH New Zealand Gardens Trust

---

### Conference 2012 – “Waikato Bouquet”

The annual NZGT Conference will be held in Hamilton in April 2012.

Conference details:

**Venue:** Novotel Hotel, Hamilton.

**Date:** 27–29 April.

The Conference opens on Friday 27th April at 8.00 am and concludes on Sunday 29th April at approximately 4.00 pm.

Keynote speaker at the conference dinner will be Barry Ferguson, an accomplished florist who spent more than 30 years in New York, catering with style to the elegant and the famous in the “Big Apple”. Be entertained and amused with his tales of high life and high jinks.



On Saturday Dr Peter Sergel will speak about the development of the Hamilton Gardens and then lead participants on a tour of the gardens. On Sunday morning Jack Hobbs will speak on good garden plants and his talk will be followed by an open forum which will be your chance to speak on trust matters. See the Conference brochure for additional speakers and garden tour details.

NB: The RNZIH AGM, award presentations and Banks Memorial Lecture is being held from 6.00 pm on 27th April. The lecture will be delivered by Dr Marion MacKay, who recently published a book about the plants at Pukeiti, and will speak on that topic.

Contact Irene Collins, Administration Manager, for the Conference Programme and Registration form.

Registrations close Monday 16th April 2012.

Email: [nzgt@rnzih.org.nz](mailto:nzgt@rnzih.org.nz)

Website: [www.gardens.org.nz/events/](http://www.gardens.org.nz/events/)

---

## RNZIH Annual General Meeting

---

This year's Annual General Meeting will be held at the NZGT conference venue.

The 2012 RNZIH Awards will be presented following the AGM and preceding the Banks Memorial Lecture.

**Venue:** Fairfield Function Room, Novotel Hotel, Hamilton.

**Date:** Friday, 27 April 2012.

**Time:** 6.00 pm.

### Agenda:

1. Apologies/In Memoriam
2. Minutes of the 2011 AGM
3. Matters arising from the Minutes of the 2011 AGM
4. Chairman's Report
5. Statement of Accounts for 2011 and Budget for 2012
6. Branch Reports
7. Election of Officers
8. General Business:
  - 8.1 Subscriptions
  - 8.2 NZ Gardens Trust
  - 8.3 RNZIH Notable Trees Trust
  - 8.4 RNZIH Education Trust
  - 8.5 NZ Plant Collections Register
  - 8.6 Publications and website
  - 8.7 Other.

**RNZIH Award Presentations** – 6.45 pm.



---

## RNZIH Notable Trees Trust

---

### Notable Tree Notes

*In each edition of the Newsletter we feature a tree from the New Zealand Tree Register. The idea is to highlight a specimen with outstanding attributes and/or an especially interesting history. Please visit the website for more information.*

#### From a humble acorn... the Davis Oak

Northland can lay claim to being the first for many things in New Zealand's relatively young history. The celebrated Māori explorer Kupe made his first landfall in Hokianga when re-discovering Aotearoa. Okiato Point, near Russell in the Bay of Islands, was the country's first capital and in the middle of a maize field in Waimate North stands a solitary English oak tree, *Quercus robur*, which is recorded as being the first oak tree-grown in New Zealand.

However, where it stands now is not where it was originally planted. The acorn from which this tree grew was brought from Goat Hill in Dorset, England, by church missionary Richard Davis. Davis arrived in the Bay of Islands in 1824 and gave the acorn to Reverend Henry Williams' wife who planted it at the mission station in Paihia.

Under instruction from Reverend Samuel Marsden, who was determined to bridge the Waitangi River and establish an inland mission station at Waimate North, Davis was permanently posted to the new mission station in 1831. He took with him the fledgling tree from Paihia and transplanted it at the new settlement where it tenaciously survives today.

The historical and botanical significance of it being the first of its species successfully grown in the country generates particular interest for those who stumble upon it. It is not the biggest oak tree to be found in New Zealand but, at 187 years old, it can be considered a national taonga. A fence was erected at a good distance around the tree about 30 years ago to try to exclude farming operations, with varying levels of success. The canopy of the tree is gradually receding and a large limb has recently snapped out.

It is sign-posted and can be viewed from the roadside at the start of Showground's Road in Waimate North and is well worth a visit for anyone travelling around the Bay of Islands.

**Kent Thwaites**  
Trustee, New Zealand Notable Trees Trust

*The New Zealand Notable Trees Trust manages a free public database containing verified details of the most notable and significant trees in this country. The database is constantly being updated. New trees may be registered at any time – together with any contributions of information or support. View online at [www.notabletrees.org.nz](http://www.notabletrees.org.nz).*



Top: The 'oldest' oak tree in New Zealand - the Davis Oak tree.

Bottom: The Historic Places Trust plaque detailing the history of the Davis Oak tree.

Photos: NZ Notable Trees Trust.

**Royal New Zealand Institute of Horticulture (Inc.)**  
Trust Directory  
As at 31st December 2011

Nature of Business	Furtherance of horticulture and promotion of education
Accountants	Smith McCoy Alford Limited Level 1 149 Victoria Street Christchurch 8013
Bankers	Bank of New Zealand
Date of Formation	The Constitution was adopted on 1 March 1975

**Royal New Zealand Institute of Horticulture (Inc.)**  
Statement of Financial Performance  
For the Year Ended 31st December 2011

	2011 \$	2010 \$
<b>REVENUE</b>		
BGANZ Grant	5,000	-
Donations	732	544
Landscape Research Funding Assistance	-	889
Interest Received	5,590	1,568
TFBIS Progress Payment	50,000	-
Lotteries Commission	-	8,080
Publications Services	335	32
Subscriptions	17,920	15,217
Sundry Income	183	-
<b>Total Income</b>	<b>79,760</b>	<b>26,330</b>
<b>Less Expenses</b>		
Accident Compensation Levy	39	24
Accountancy Fees	1,388	1,350
AGM Expenses	359	853
Audit Fees	1,847	850
Bank Charges	171	182
Conference Expenses	-	984
General Expenses	44	75
Honorarium - Journal Editor & Website Maintenance	-	2,000
Insurance	607	607
National Executive General	326	493
Newsletters & Journals	10,506	10,248
Plant Collections	-	224
Postage	504	1,007
Printing & Stationery	541	318
Rents	1,614	1,593
Skellerup Award	-	5,000
Small Asset Purchases	104	-
Subscriptions	-	133
Telephone, Tolls & Internet	585	823
Travel - National	442	-
Wages & Salaries	4,560	6,663
<b>Total Expenses</b>	<b>23,637</b>	<b>33,429</b>
<b>Net Surplus/(Deficit) Before Depreciation</b>	<b>56,123</b>	<b>(7,099)</b>
<b>Less Depreciation</b>		
Depreciation as per Schedule	1,650	1,675
<b>Net Surplus/(Deficit) Before Beneficiary Distributions</b>	<b>54,473</b>	<b>(8,774)</b>

The accompanying notes form part of these financial statements.  
These financial statements should be read in conjunction with the attached Compliance Report.

- 1 -

The accompanying notes form part of these financial statements.  
These financial statements should be read in conjunction with the attached Compliance Report.

- 2 -

**Royal New Zealand Institute of Horticulture (Inc.)**

**Statement of Financial Performance**  
**For the Year Ended 31st December 2011**

	<b>2011</b>	<b>2010</b>
	<b>\$</b>	<b>\$</b>
<b>EXTRAORDINARY ITEMS</b>		
Prior Period Adjustment	-	(2,489)
<b>NET SURPLUS/(DEFICIT)</b>	<u><u>\$54,473</u></u>	<u><u>(\$6,285)</u></u>

*The accompanying notes form part of these financial statements.  
These financial statements should be read in conjunction with the attached Compilation Report.*

- 3 -

**Royal New Zealand Institute of Horticulture (Inc.)**

**Statement of Movements in Equity**  
**For the Year ended 31st December 2011**

	<b>2011</b>	<b>2010</b>
	<b>\$</b>	<b>\$</b>
<b>EQUITY AT START OF PERIOD</b>	158,196	159,237
<b>SURPLUS &amp; REVALUATIONS</b>		
Net Surplus After Tax	54,473	(6,285)
<b>Total recognised revenues &amp; expenses</b>	<u>54,473</u>	<u>(6,285)</u>
<b>OTHER MOVEMENTS</b>		
Interest Capitalised to Prizes Funds	-	5,244
<b>EQUITY AT END OF PERIOD</b>	<u><u>\$212,669</u></u>	<u><u>\$158,196</u></u>

*The accompanying notes form part of these financial statements.  
These financial statements should be read in conjunction with the attached Auditor's Report.*

- 4 -

# Royal New Zealand Institute of Horticulture (Inc.)

## Statement of Financial Position

As at 31st December 2011

	2011	2010
	\$	\$
<b>CURRENT ASSETS</b>		
BNZ - Cheque Account	59,986	13,776
BNZ - Publishing Account	6,729	2,659
Cash on Hand	4	70
GST Refund Due	-	2,746
Accounts Receivable	-	1,292
Accrued Interest	1,748	1,489
Subscriptions in Arrears	-	850
<b>Total Current Assets</b>	<b>68,467</b>	<b>22,882</b>
<b>NON-CURRENT ASSETS</b>		
Fixed Assets as per Schedule	4,795	6,445
<b>Investments</b>		
BNZ - Trusts & Bequests	146,126	133,203
Plant Collections Register Development costs	985	-
<b>Total Non-Current Assets</b>	<b>151,856</b>	<b>139,738</b>
<b>TOTAL ASSETS</b>	<b>220,323</b>	<b>162,620</b>
<b>CURRENT LIABILITIES</b>		
GST Due for payment	7,654	-
Accounts Payable	-	169
Subscriptions in Advance	-	4,255
<b>Total Current Liabilities</b>	<b>7,654</b>	<b>4,424</b>
<b>TOTAL LIABILITIES</b>	<b>7,654</b>	<b>4,424</b>
<b>NET ASSETS</b>	<b>\$212,669</b>	<b>\$158,196</b>
<b>Represented by:</b>		
<b>EQUITY</b>		
Trust Account Prizes	143,012	143,012
Retained Earnings	69,657	15,184
<b>TOTAL EQUITY</b>	<b>\$212,669</b>	<b>\$158,196</b>

The accompanying notes form part of these Financial Statements and should be read in conjunction with the reports contained herein.

For and on behalf of the Executive,

Dated this      day of      2012

Chairman      President

The accompanying notes form part of these financial statements.  
These financial statements should be read in conjunction with the attached Auditor's Report.

- 5 -

# Royal New Zealand Institute of Horticulture (Inc.)

## Depreciation Schedule

For the Year ended 31st December 2011

Asset	Cost Price	Book Value 01/01/2011	Additions Disposals	Gain/Loss on Disposal	Capital Profit	--- Depreciation --- Mth. Rate	Accum Deprec 31/12/2011	Book Value 31/12/2011
<b>OFFICE EQUIPMENT</b>								
Computer Trolley	183					12 0.0% DV	0	183
Two Drawer Filing Cabinet	444					12 0.0% DV	0	444
Chair	475					12 0.0% DV	0	475
Filing Cabinet	1,854					12 0.0% DV	0	1,854
Typical Chair With Arms	229					12 0.0% DV	0	229
Typical Chair Without Arms	229					12 0.0% DV	0	229
Apple Keyboard	302					12 0.0% DV	0	302
Apple System Peripheral	90					12 0.0% DV	0	90
Display Board	1,584					12 0.0% DV	0	1,584
Computer Printer	2,400					12 0.0% DV	0	2,400
Computer Trolley	536					12 0.0% DV	0	536
Laser Printer	5,310					12 0.0% DV	0	5,310
Scanner	125					12 0.0% DV	0	125
Cordless Phone	221					12 0.0% DV	0	221
2 Four Drawer Filing Cabinets	617					12 0.0% DV	0	617
Kipflind Compact Computer Unit	210					12 0.0% DV	0	210
Kipflind Compact Punchbinder	575					12 0.0% DV	0	575
Mitsumi Fan	47					12 0.0% DV	0	47
Printer	1,920					12 0.0% DV	0	1,920
Printer, Philips	622	1				12 0.0% DV	0	621
Brother HL 1040 Laser Printer	991	1				12 0.0% DV	0	990
Microsoft & Publisher Software	551	1				12 0.0% DV	0	550
Website Software	284	57				12 0.0% DV	8	235
Banner	1,855	54				12 0.0% DV	26	1,827
Celetron Computer & Printer	1,616	6,444				12 5Yr. SL	1,616	3,827
Subtotal	23,802						23,008	4,794
<b>TOTAL</b>	<b>29,802</b>	<b>6,444</b>					<b>25,008</b>	<b>4,794</b>

The accompanying notes form part of these financial statements.  
These financial statements should be read in conjunction with the attached Auditor's Report.

- 6 -



## Royal New Zealand Institute of Horticulture (Inc.)

### Notes to the Financial Statements

For the Year ended 31st December 2011

#### 1. STATEMENT OF ACCOUNTING POLICIES

These financial statements are for Royal New Zealand Institute of Horticulture (Inc.). Royal New Zealand Institute of Horticulture (Inc.) is engaged in the business of Furtherance of horticulture and promotion of education.

These financial statements are of special purpose and have been prepared for taxation purposes on the principles contained in the Income Tax Act 2007 and internal management purposes.

The accounting policies adopted are not in conformity with generally accepted accounting practice. Accordingly, the financial statements should only be relied on for the expressly stated purpose.

The accounting principles recognised as appropriate for the measurement and reporting of earnings and financial position on an historical cost basis have been used, with the exception of certain items for which specific accounting policies have been identified.

#### Changes in Accounting Policies

This year subscriptions in advance and subscriptions in arrears have been brought into the account. Other than this all policies have been applied on bases consistent with those used in previous years.

#### Specific Accounting Policies

In the preparation of these financial statements, the specific accounting policies are as follows:

##### (a) Property, Plant & Equipment

The entity has the following classes of Property, Plant & Equipment:  
Office Equipment

All property, plant & equipment is stated at cost less depreciation.

Depreciation has been calculated in accordance with rates permitted under the Income Tax Act 2007.

##### (b) Goods & Services Tax

These financial statements have been prepared on a GST exclusive basis with the exception of accounts receivable and accounts payable which are shown inclusive of GST.

##### (c) Taxation

No provision for Income Tax has been made as there is no current or deferred tax payable. The Institute is registered with the Charities Commission (CC30414).

##### (d) Investments

Investments are carried at the lower of cost and net realisable value. Where in the Chairman's opinion there has been a permanent reduction in the value of the investments this has been brought to account in the current period.

##### (e) Revenue

Interest income is recognised using the effective interest method.

*The accompanying notes form part of these financial statements.  
These financial statements should be read in conjunction with the attached Auditor's Report.*

- 7 -

## Royal New Zealand Institute of Horticulture (Inc.)

### Notes to the Financial Statements

For the Year ended 31st December 2011

#### (f) Government Grants

Government grants are reported at their fair value where there is reasonable certainty that the grant will be received and all attaching conditions will be met.

#### (g) Receivables

Receivables are stated at their estimated realisable value. Bad debts are written off in the year in which they are identified.

#### 2. AUDIT

These financial statements have been subject to audit, please refer to Auditor's Report.

#### 3. CONTINGENT LIABILITIES

At balance date there are no known contingent liabilities (2010:\$0). Royal New Zealand Institute of Horticulture (Inc.) has not granted any securities in respect of liabilities payable by any other party whatsoever.

#### 4. RELATED PARTIES

There were no related party transactions during the year under review.

#### 5. SECURITIES AND GUARANTEES

There was no overdraft as at balance date nor was any facility arranged.

#### 6. PROPERTY, PLANT & EQUIPMENT

	2011	2010
	\$	\$
Office Equipment		
At cost	29,803	29,803
Less accumulated depreciation	(25,008)	(23,358)
	4,795	6,445
Current year depreciation	1,650	1,675
	1,650	1,675
	\$4,795	\$6,445
<b>Total Property, Plant &amp; Equipment</b>		
	\$1,650	\$1,675

*The accompanying notes form part of these financial statements.  
These financial statements should be read in conjunction with the attached Auditor's Report.*

- 8 -

## Ngā Tipu Whakaoranga: Māori Plant Use database

---

Ngā Tipu Whakaoranga (plants that sustain us), at <http://maoriplantuse.landcareresearch.co.nz>, is part of the Landcare Research suite of databases. The database evolved from a project funded by the Commonwealth Science Council in the late 1980s, which aimed to have the cultural and economic value of plants to indigenous people recorded, recognised and considered in efforts to conserve biodiversity.

The database contains fully referenced, detailed information on how Māori used plants to survive in New Zealand, particularly before the arrival of Europeans. Material relating to later economic uses of native plants is recorded too, though generally not timber uses and the kauri gum trade.

Fungi and seaweeds are included, and there are references to some Pacific plants, such as *Pandanus*, that have links to Māori culture. Also included are pertinent references on traditional resource rights and intellectual property claims relating to plant uses by indigenous peoples.

The information is taken from the written record, mostly published (books, articles, dictionaries, newspapers) and some unpublished (such as manuscripts and letters). Usually information is recorded as written in the source material, without interpretation, although editorial comment is sometimes made for clarification.

Māori names for plants are recorded, though it's not always possible to link them with confidence to particular species. And there are many species for which the names are either no longer known, or which were not recognised as distinct. Conversely, there are species such as *Phormium* spp. where modern botanical classification doesn't do justice to the many important variations determined and named by Māori (there are more than 550 records relating to flax!).

If you are interested in finding out as much as possible about the uses of a particular plant, don't stop at the first linked page you get to. Go into the 'Search' tab and look for the plant again. There are often lots more references with useful information. Browse through the topics in the drop-down list, or search by fields such as "author" or "medicinal". Clicking on the kowhai flower beside the botanical name will take you to the New Zealand Plant Names database (<http://nzflora.landcareresearch.co.nz/>).

A lot of technical work has been done in the last couple of years to upgrade the formatting of Ngā Tipu Whakaoranga to enable it to be integrated with other databases (it started its life on the VAX storage system, in the days when PCs were only just being used in workplaces, and certainly well before the Internet!). It continues to evolve.

We're always happy to receive new information, comments and corrections.

**Sue Scheele**  
Landcare Research  
[scheeles@landcareresearch.co.nz](mailto:scheeles@landcareresearch.co.nz)



## New Zealand native orchid key

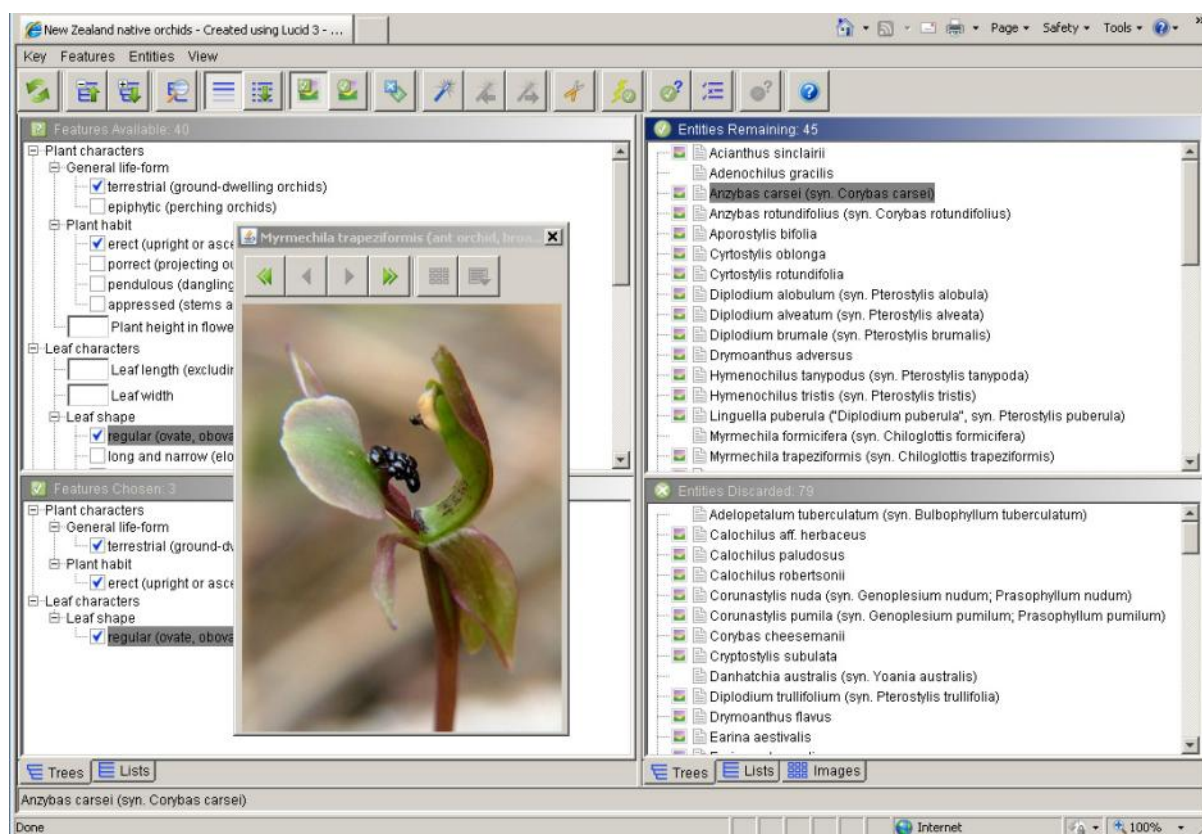
A demonstration version of the New Zealand native orchid key is now available for evaluation and testing. The link is [www.landcareresearch.co.nz/research/biosystematics/plants/orchidkey/](http://www.landcareresearch.co.nz/research/biosystematics/plants/orchidkey/).

There is a help file explaining how to use interactive keys at: [www.landcareresearch.co.nz/research/biosystematics/plants/help\\_key/index.asp](http://www.landcareresearch.co.nz/research/biosystematics/plants/help_key/index.asp). There is also a link on that page to troubleshooting (what you need to do if the key does not work for you).

Bear in mind that character scoring is not yet complete, so some of the orchids may not key out if you select some of these features missing for a particular orchid. Further images will also be added as they become available.

Completion of this project is scheduled for 1 May 2013. The project is funded by the TFBIS (Terrestrial & Freshwater Biodiversity Information System) programme and is a collaboration between myself (Murray Dawson), Jeremy Rolfe and the New Zealand Native Orchid Group. An article outlining the new project was published in *The New Zealand Native Orchid Group Journal* 121: p. 22 (online at: [www.nativeorchids.co.nz/Journals/121/121/index.html](http://www.nativeorchids.co.nz/Journals/121/121/index.html)).

Please feel free to circulate this information to others who may be interested. Your feedback and contributions are most welcome!



Screen-shot of the new online native orchid key.

Murray Dawson  
Landcare Research  
[dawsonm@landcareresearch.co.nz](mailto:dawsonm@landcareresearch.co.nz)

## New Zealand Plant Collection Register: March 2012 update

---

Work is progressing since I announced the start of the project in our last Newsletter (December 2011; see [www.rnzih.org.nz/Newsletter/Newsletter\\_December\\_2011.pdf](http://www.rnzih.org.nz/Newsletter/Newsletter_December_2011.pdf)).

**Collections** – we are beginning to gather plant collection records. Our sincere thanks to these and other contributors:

- Hamilton Gardens (>15,000 records)
- Hackfalls Arboretum, near Gisborne (>3500)
- Tree species in the SCION grounds, Rotorua (>540)
- Titiraurangi Arboretum, Wanaka (>530)
- The *Magnolia* collection at Lincoln University, Canterbury (145)
- Herb Federation member listings.

**Cultivated plant names** – so far we have >20,000 botanical and common names from about 20 reference sources. It is a huge task to validate all these names to ensure correct spelling and usage.

Kathleen Barber is now helping us with this project. Kath recently completed a extramural Diploma in Horticulture through Massey University. She also works part-time at the Christchurch Botanic Gardens visitors centre and as a cellar master at Karikaas Cheese Factory.

**Murray Dawson**

**New Zealand Plant Collection Register Project**

[collections@rnzih.org.nz](mailto:collections@rnzih.org.nz)



ROYAL NEW ZEALAND INSTITUTE OF HORTICULTURE  
PO Box 12, Lincoln University, Canterbury, NZ

New Zealand  
Permit No. 111

