



ROYAL NEW ZEALAND INSTITUTE OF HORTICULTURE

Newsletter

2014 No. 1, March
ISSN 1174-6947 (Print)
ISSN 1179-7444 (Online)

President's Comments



The image of horticulture

I guess image has always been important in most if not all human societies. In Western culture the houses people live in, the vehicles used and the clothes that are worn all indicate status.

It troubles me that currently horticulture, and ornamental horticulture in particular, is largely seen as an activity embraced at the amateur level, only by the elderly, while at the money earning level (we are not seen as a "Profession" in the same way as are lawyers or accountants), it is seen as something that only those unable to do anything else, end up doing.

In an era of political correctness, I find it deeply insulting that the term "on gardening leave" is used when an errant politician or civil servant is stood down, while his or her supposed misdeeds are investigated.

Why is it that cooks, who perhaps except in France, had the same status as under gardeners and grooms, have now morphed into "Celebrity Chefs"? Why is it that ageing boy racers have gained celebrity status in TV programmes like Top Gear?

The sheer diversity of genera that makes up ornamental horticulture, alone requires a reasonable level of intelligence and curiosity and more than a single lifetime to explore in any depth.

Even at the commercial level, little attention is paid to the achievements of our leading practitioners by the mainstream media. Egmont Seeds, for example, have installed state of the art machinery, that puts them far ahead of overseas seed companies in much larger countries. Did I miss coverage of this?

Let those of us in the RNZIH be proud of what we do and think of ways to get the message out: ornamental horticulture is in reality a facet of the visual arts; and the activities that we undertake such as the RNZIH New Zealand Gardens Trust open gardens scheme, the Notable Tree Register and the Plant Collection Register are very important and contribute significantly to New Zealand's cultural fabric.

Keith Hammett
President, RNZIH

RNZIH Annual General Meeting

To be held in Auckland along with the 2014 RNZIH Awards and the Banks Memorial Lecture.

Venue: Rattray Function Room, Mt Albert Community Recreation Centre, 773 New North Rd, Mt Albert.

Date: Thursday, 8 May 2014.

Time: 6.00 pm.

Agenda:

1. Apologies / In Memoriam
2. Minutes of the 2013 AGM
3. Matters arising from the Minutes of the 2013 AGM
4. Chairman's Report
5. Statement of Accounts for 2013 and Budget for 2014
6. Branch Reports
7. Election of Officers
8. General Business:
 - 8.1 Subscriptions
 - 8.2 RNZIH NZ Gardens Trust
 - 8.3 NZ Notable Trees Trust
 - 8.4 RNZIH Education Trust
 - 8.5 NZ Plant Collection Register
 - 8.6 Publications and website
 - 8.7 Other.

RNZIH Award Presentations: 6.45 pm.

Banks Memorial Lecture (a free public lecture): Auckland's Remarkable Urban Forest by Dr Mike Wilcox

The Banks Memorial Lecture is a free lecture open to the public. It commemorates Sir Joseph Banks, botanist on Captain Cook's first voyage to New Zealand. During a later distinguished scientific career, he was Director of the Royal Botanic Gardens at Kew, London.

Venue: Rattray Function Room, Mt Albert Community Recreation Centre, 773 New North Rd, Mt Albert.

Date: Thursday, 8 May 2014

Time: 7.00-8.00 pm.

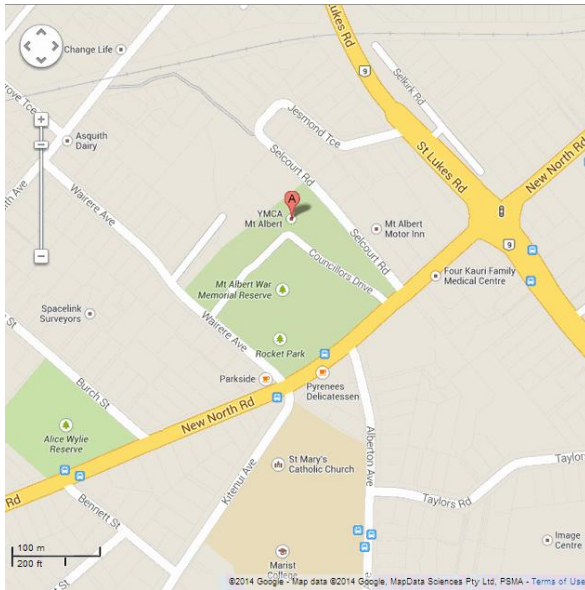
RNZIH National Office	PO Box 85012, Lincoln University, Canterbury Email: office@rnzih.org.nz Website: www.rnzih.org.nz
Patron	Governor General of New Zealand Lt Gen Rt Hon Sir Jerry Mateparae
Vice Patrons	Ralph Ballinger OBE, AHRH Beverley McConnell, QSM, AHRH

National Executive	
Keith Hammett AHRH (RNZIH President)	488C Don Buck Road, Massey, Auckland 0614 Phone: (09) 833 9453 Email: hammettk@rnzih.org.nz
Penny Clifflin FRIH	Department of Landscape Architecture Faculty of Creative Industries and Business, Unitec Institute of Technology, Private Bag 92025, Auckland 1142 Phone: (09) 815 4321 Ext 7110 Email: cliffinp@rnzih.org.nz
Murray Dawson FRIH (RNZIH Webmaster; Journal Editor)	Landcare Research, PO Box 69040, Lincoln 7640, Canterbury Phone: (03) 321 9645 Fax: (03) 325 2418 Email: dawsonm@rnzih.org.nz
George Tregidga (RNZIH Education Trust representative)	3 The Crescent, Tindalls Beach, Whangaparaoa 0930 Phone: (09) 424 5322 Mobile: 021 223 7953 Email: tregidgag@rnzih.org.nz
Jeremy Hawker (BGANZ-NZ representative)	Christchurch Botanic Gardens, Christchurch City Council, PO Box 237, Christchurch 8140 Phone: (03) 941 7580 Email: hawkerj@rnzih.org.nz
David Sole FRIH	Botanic Gardens of Wellington 101 Glenmore Street, Wellington Phone: (04) 803 8296 Mobile: 021 227 8296 Fax: (04) 499 1903 Email: soled@rnzih.org.nz
Eddie Wullems (RNZIH Treasurer)	Hamilton City Council, Private Bag 3010, Hamilton Phone: (07) 838 6934 Mobile: 021 790 203 Fax: (07) 838 6935 Email: wullemse@rnzih.org.nz

New Members

A warm welcome to our new members, including:

Peter Beaufoy	MATAMATA
Lianne Mylie	HAMILTON
Jennifer Dolan	OTAKI
Dr John Liddle	WAIKANAE
Liza Whalley	LOWER HUTT
Dr Warwick Harris	AKAROA
Alan & Jane Matchett	DUNEDIN



Rattray Function Room, Mt Albert Community Recreation Centre, 773 New North Rd, Mt Albert. Source: Google Maps.

Mike Wilcox's Biography

Mike Wilcox is a retired forestry consultant and scientist. He is considerably involved in Auckland's botany, including being an Honorary Research Associate at the Auckland Museum, and a member of the Auckland Botanical Society, Friends of the Auckland Botanic Gardens, International Dendrology Society, Forest & Bird, Auckland Tree Council, and New Zealand Institute of Forestry. He also serves as a tree guide at Cornwall Park. As well as this overview of Auckland's urban forest, he has done more detailed assessments of the tree flora in many of Auckland's parks and campuses, including the Domain, Cornwall Park / One Tree Hill, Monte Cecilia, and Unitec, and also of Rangitoto Island. He is currently working on a full record of the plants in West Lynn Garden, New Lynn and an account of the native and naturalised plants in the Ahirapa-Kaitaia area in Northland. Not content with forests of the land, he is also engaged in a survey of the flora of Auckland's 'forests of the sea' – the seaweeds.

Banks Lecture Abstract

In this lecture, Mike Wilcox will give an account of the different kinds of forest that make up the urban greenery of Auckland. The main forest types are natural remnants of native bush, native forest restoration plantings, various kinds of exotic woodlands (such as pines, eucalypts, wattles, and willows), street trees, home garden trees, and the very important trees planted on larger sites such as parks, cemeteries and campuses. This classification of urban forest types will be relevant to other cities in New Zealand. The botanical diversity of trees planted in Auckland is impressive, but there is a core group of large trees which give Auckland its special character. The benefits of the urban forest are numerous, but Auckland would benefit by having better management of its urban forest, backed up by research.



Mike has a BSc in Botany from Auckland University, an MA in Forestry from Oxford University, and a PhD from North Carolina State University where he did research on the genetics of loblolly pine (*Pinus taeda*), leading to a career in quantitative genetic research and plant breeding of forest trees at the Forest Research Institute (now Scion) in Rotorua. In his international consulting work, Mike undertook numerous assignments in China, India, Sri Lanka, Philippines, Fiji, Samoa, Vietnam, Spain, Turkey, and South Africa, specialising in forestry plantations.

RNZIH New Zealand Gardens Trust

NZGT Conference: 4–6th April 2014

Roots Deep in Northland

This is your opportunity to experience 'the deep roots of Northland'. Come and see a variety of gardens including the unique gardens of Pompallier House and enjoy the historic north with a powhiri in the famous Waitangi Treaty House Gardens.

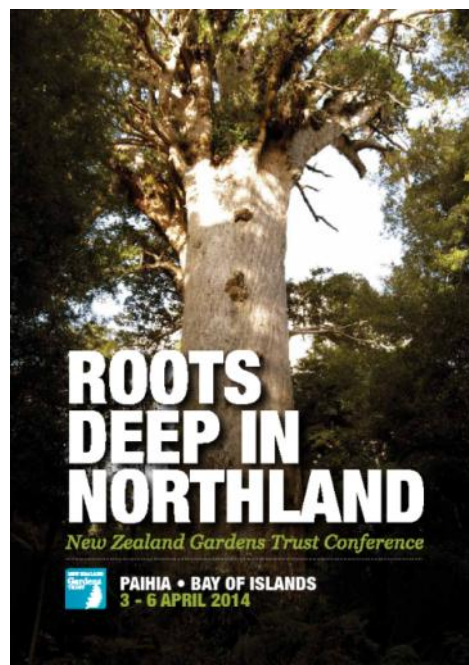
On Thursday 3rd April there is a pre-conference tour to Liz Morrow's Omaio Garden, Colin and Jean Sanders Nymet Garden, Whangarei Quarry Gardens, and Kate and Roger Ballard's garden.

After the conference registration on Friday 4th April, we depart by coach for a two-day tour to Butler Point, Monto Garden, Wharepuke Sub-Tropical Garden, Palmco Display Gardens, Wairiki Point and Kokinga Pa, and Ngahuha.

We have a great line up of speakers beginning from the afternoon of Saturday 5th April and continuing on Sunday 6th April. Speakers include David Muir (talking about *The Jim Finlay Camellias – a Horticultural Detective Story*), David Mules (*Reconnecting Northland*), Jill Malcolm (*Garden Write*), Caroline Fitzgerald (guest speaker at the conference dinner), Richard Hart (*A Garden Assessor's View*), and Russell Fransham (*Some New Subtropicals for Gardeners*).

Our NZ Gardens Trust conference will prove to be a not to be missed event – please get your registration in soon because **registrations close 20 March 2014**.

Looking forward to seeing you there.



Irene Collins, Administration Manager
New Zealand Gardens Trust
Email: nzgt@rnzih.org.nz
Web: www.gardens.org.nz
Ph: 027 NZGTrst
027 694 8778

Ellerslie Flower Show

A big thank you to Richard and Jill Simpson and Brian and Nancy Tichborne for creating the beautiful setting for the Ellerslie stand in which to promote New Zealand's best gardens.

The stand won a bronze award; visitors were particularly interested in a few of the unusual display plants, including *Anigozanthos* 'Royal Cheer'. Many helpful volunteers manned the stand over the five days, handing out more than 3,000 NZGT guides, encouraging people to visit our gardens and answering questions until their voices got hoarse.



Keeping the plants fresh at the NZGT stand.

It was encouraging to see the enthusiasm with which the guide was received and the amount of people keen to take them back to their garden clubs and organize visits.

Maggie Barry gave a huge plug to the trust at the end of her packed talk in the *NZ Gardener* marquee. She said wonderful things about the quality of the gardens, and the work the trust is doing. It's great to have an advocate of Maggie's calibre.

Preliminary numbers to Ellerslie are estimated around 45,000 attendees, with feedback indicating visitors were much more impressed that in 2013. Many of the volunteers had a few quick breaks in which to take a peek at the show's action. The Jennie Gillies costumes were an amazing highlight, and the show gardens were full of ideas and inspirations. There was so much to see that it was nearly impossible to do it all justice. You can find images from the show at www.garden-nz.co.nz/gallery/category/308.html.

Heartfelt thanks are also due to our many sponsors including Trotts Garden, The Giants House, Peek Exhibition, LG Productions, Rachels Rentals, Halswell Timber, Johanna and Jonathon Blakely, and Oderings Nursery.

Sophie Barker

RNZIH Education Trust

The 2014 the Young Horticulturist of the Year competition: March update



Celebrating 10 Years

The Education Trust are pleased to announce the launch of the 2014 Young Horticulturist of the Year competition. It will be our tenth competition, a noteworthy achievement.

We welcome back the competition partners; AGMARDT, Fruitfed Supplies and Turners & Growers, as well as the competition supporters; Bayer Crop Science, Primary ITO, Massey University, NZ Winegrowers and *New Zealand Gardener*.

The Education Trust aims to highlight the tenth competition by making the awards dinner a special event, highlighting the past winners from around New Zealand and their current positions in the horticulture industry.

Young Leaders Forum

The 2014 Young Leaders Forum will take place in early May for the six 2013 competitors.

The aim of the forum is to provide a platform for recent competitors to gain a wider understanding of the horticulture industry, to network with each other and with leading suppliers in the industry.

The two day forum will include presentations from Bayer Crop Science, Fruitfed Supplies, Turners & Growers, and Primary ITO and a site visit to Status Produce, a leading tomato glasshouse grower. In addition, the 2013 competitors will take part in a one day introduction to leadership; ANZ have kindly provided the facilitator.

The Education Trust sincerely thanks Bayer Crop Science, Fruitfed Supplies, Turners & Growers, Primary ITO and ANZ for their generous support.

Sector Competitions Update

A number of sector associations will be running regional and national competitions over the winter months to identify who will represent their sector in the Grand Final including:

NZ Winegrowers: Young Viticulturist of the Year

Three regional competitions held in Central Otago, Marlborough and Hawkes Bay will take place during June and July with a play-off during conference in August 2014.

Landscaping New Zealand: City Parks Services Young Landscaper of the Year

A national competition will take place on 3rd July.

Nursery and Garden Industry of New Zealand: HortFert Young Achiever competition

A national competition will take place on 23rd June.

Horticulture NZ: Young Grower of the Year

This includes three regional Young Fruit Grower competitions in Hawkes Bay, Bay of Plenty and Nelson, as well as a national Young Vegetable Grower of the Year competition. A play-off will take place during conference in July.

NZ Recreation Association – Parks and Gardens: Young Amenity Horticulturist of the Year
A national competition will take place in July.

In addition, the RNZIH Education Trust hopes to see a cut-flower grower represented in the competition this year.

Recent Media Highlights

Kelly Jean Kerr and Eliza Whalley's individual AGMARDT Market Innovation Projects, business plans the finalists complete in their own time in the lead up to the Grand Final, have been so successful they are busy taking their concepts to the next stage.

Eliza has received a generous funding grant from AGMARDT to develop her concept on re-engineering the current design for backpack sprayers into a comfortable ergonomic sprayer suitable to wear by both men and women.

An app for novice gardeners was Kelly Jean Kerr's AGMARDT project idea, which the Nursery and Garden Industry of New Zealand are looking at adopting. We will cover both Kelly Jean's and Eliza's projects in a special media release during March 2014 to highlight their successes.

You can support the Competition

The Education Trust welcomes any donations to support this important and very worthwhile initiative in the horticulture industry. Donations will assist with the costs to run the competition each year. Individuals or companies interested in supporting the competition please contact:

Elenka Nikoloff
Event Manager
Email: elenka.nikoloff@xtra.co.nz



Financial Reports

Royal NZ Institute of Horticulture (Inc.)

31 December 2013

Royal NZ Institute of Horticulture (Inc.)

For the year ended 31 December 2013

Compilation Report to the Trustees of Royal NZ Institute of Horticulture (Inc.)

Scope

On the basis of information provided and in accordance with Service Engagement Standard No. 2: Compilation of Financial Information, we have compiled the financial statements of Royal NZ Institute of Horticulture (Inc.) for the period ended 31 December 2013.

As described in Note 1 to the financial statements, these financial statements are a special purpose report, for internal management and taxation purposes only.

Responsibilities

You are solely responsible for the information contained in these financial statements and have determined that the accounting policies used are appropriate to meet your needs and for the purpose that the financial statements were prepared.

The financial statements were prepared exclusively for your benefit and we do not accept responsibility to any other person for the contents of the financial statements.

No audit or review engagement undertaken

Our procedures use accounting expertise to undertake the compilation of the financial statements from information provided and do not include verification or validation of that information. No audit or review engagement has been performed and accordingly no assurance is expressed.

Reporting Framework

The accounting policies adopted are not in conformity with generally accepted accounting practice. Accordingly the financial statements should only be relied on for the expressly stated purpose.

Chartered Accountants

Smith McCoy Alford Limited
Level 1
149 Victoria Street
Christchurch 8013
www.smithmccoy.co.nz
12 February 2014

The accompanying notes form part of these financial statements. These financial statements have not been subject to audit or review, and should be read in conjunction with the attached Compilation Report.

Royal NZ Institute of Horticulture (Inc.) For the year ended 31 December 2013

Nature of Business

Furtherance of Horticulture and Promotion of Education

Date of Formation

The Constitue was adopted on 1 March 1975

IRD Number

010-575-006

Accountants

Smith McCoy Alford Limited
Level 1
149 Victoria Street
Christchurch 8013

Bankers

Bank of New Zealand

Royal NZ Institute of Horticulture (Inc.) For the 12 months ended 31 December 2013

	Dec-13	Dec-12
Revenue		
Donations Received	616	2,966
Interest Received	4,624	6,634
Publications Services	-	35
Subscription Receipts	18,434	18,934
Sundry Income	9,076	3,278
TFBIS Progress Payments	40,000	45,000
Total Revenue	73,749	76,847
Less Expenses		
Accountancy Fees	1,296	1,100
Advertising	-	642
AGM Expenses	141	764
Bank Charges	160	181
Collection Costs	-	261
Computer Expenses	490	-
General Expenses	44	44
Giant - RNZIH Education Trust	870	2,748
Honorarium - Journal Editor & Website Maintenance	1,739	-
Insurance	671	669
Interest - LOM	-	3
Medals	-	725
Newsletters & Journals	12,095	11,205
Plant Collections	6,154	-
Printing, Stamps & Stationery	73	983
Rents	1,614	1,908
Skeleton Award	2,669	2,174
Subscriptions	-	66
Telephone & Tolls	679	585
Travel and accommodation	-	232
Total Expenses	28,634	24,380
Depreciation		
Depreciation as per Schedule	4,674	3,158
Total Depreciation	4,674	3,158
Total	33,309	27,538
Trustees Income (Deficit) before Tax	39,440	49,309
Total Adjustments and Taxation for the Year	-	-
Trustees Net Income (Deficit) for the Year	39,440	49,309

The accompanying notes form part of these financial statements. These financial statements have not been subject to audit or review, and should be read in conjunction with the attached Compilation Report

The accompanying notes form part of these financial statements. These financial statements have not been subject to audit or review, and should be read in conjunction with the attached Compilation Report

Statement of Movements in Equity



Royal NZ Institute of Horticulture (Inc.) As at 31 December 2013

	31 Dec 2013	31 Dec 2012
Trust Equity		
Opening Balance	261,043	-
Gifting	-	143,012
plus movement for the year		
Current Year Earnings	39,440	49,309
Retained Earnings	-	68,723
Total movement for the year	39,440	118,032
Total Trust Equity	300,483	261,043

The accompanying notes form part of these financial statements. These financial statements have not been subject to audit or review, and should be read in conjunction with the attached Compliance Report.

Statement of Financial Position



Royal NZ Institute of Horticulture (Inc.) As at 31 December 2013

	31 Dec 2013	31 Dec 2012
Assets		
Current Assets		
Accrued Interest	-	1,601
BNZ Cheque Account	17,346	63,761
BNZ Publishing Account	78,070	34,264
Trade and Other Receivables	46,000	-
Total Current Assets	141,416	99,626
Non Current Assets		
Fixed Assets as per Schedule	12,180	16,854
Total Non Current Assets	12,180	16,854
Investments		
BNZ - Trust & Bequest Term Deposits	151,640	147,325
Total Investments	151,640	147,325
Total Assets	305,236	263,805
Liabilities		
Current Liabilities		
GST	4,753	2,762
Total Current Liabilities	4,753	2,762
Total Liabilities	4,753	2,762
Net Assets	300,483	261,043
Trust Equity		
Funds Settled	143,012	143,012
Retained Earnings	157,472	118,032
Total Trust Equity	300,483	261,043

Signoff

For and on behalf of the Trustees:

Chairman _____ President _____

Dated this day of 2013

The accompanying notes form part of these financial statements. These financial statements have not been subject to audit or review, and should be read in conjunction with the attached Compliance Report.

Depreciation Schedule

Royal NZ Institute of Horticulture (Inc.) 1 January 2013 to 31 December 2013

Name	Cost	Rate	Purchased	Disposed	1-Jan-13	Purchases	Depreciation	Disposals	Accum Dep	31-Dec-13
Office Equipment										
Apple Keyboard	302	0.0% DV	1 Dec 2012		-	-	-	-	302	-
Apple System Peripheral	90	0.0% DV	1 Dec 2012		-	-	-	-	90	-
Banner	284	14.0% DV	1 Dec 2012		42	-	6	-	248	36
Brother HL 1040 Laser Printer	622	48.0% DV	1 Dec 2012		1	-	-	-	621	1
Calculator	120	0.0% DV	1 Dec 2012		-	-	-	-	120	-
Celeron Computer & Printer	1,855	48.0% DV	1 Dec 2012		15	-	7	-	1,847	8
Chair	475	0.0% DV	1 Dec 2012		-	-	-	-	475	-
Computer - Phillips	1,933	48.0% DV	1 Dec 2012		1	-	-	-	1,932	1
Computer Printer	2,400	0.0% DV	1 Dec 2012		-	-	-	-	2,400	-
Computer Trolley	183	0.0% DV	1 Jan 2012		-	-	-	-	183	-
Computer Trolley	536	0.0% DV	1 Dec 2012		-	-	-	-	536	-
Cordless Phone	221	0.0% DV	1 Dec 2012		-	-	-	-	221	-
Database	15,217	20.0% SL	30 Jun 2012		13,695	-	3,043	-	4,565	10,652
Database	8,080	20.0% SL	1 Dec 2012		3,097	-	1,616	-	6,599	1,481
Display Board	1,584	0.0% DV	1 Dec 2012		-	-	-	-	1,584	-
Filing Cabinet	1,854	0.0% DV	1 Dec 2012		-	-	-	-	1,854	-
Four Drawer Filing Cabinets (2)	617	0.0% DV	1 Dec 2012		-	-	-	-	617	-

The accompanying notes form part of these financial statements. These financial statements have not been subject to audit or review, and should be read in conjunction with the attached Compilation Report.

Depreciation Schedule

Name	Cost	Rate	Purchased	Disposed	1-Jan-13	Purchases	Depreciation	Disposals	Accum Dep	31-Dec-13
Heater	50	0.0% DV	1 Dec 2012		-	-	-	-	50	-
Klipblind Compact Punchbinder	575	0.0% DV	1 Dec 2012		-	-	-	-	575	-
Laser Printer	5,300	0.0% DV	1 Dec 2012		-	-	-	-	5,300	-
Microsoft & Pagemaker Software	991	48.0% DV	1 Dec 2012		1	-	-	-	990	1
Mistral Fan	47	0.0% DV	1 Dec 2012		-	-	-	-	47	-
Two Drawer Filing Cabinet	444	0.0% DV	1 Dec 2012		-	-	-	-	444	-
Two Tier Adjustable Computer Unit	210	0.0% DV	1 Dec 2012		-	-	-	-	210	-
Typist Chair with Arms	229	0.0% DV	1 Dec 2012		-	-	-	-	229	-
Typist Chair without Arms	249	0.0% DV	1 Dec 2012		-	-	-	-	249	-
Website Software	551	48.0% DV	1 Dec 2012		1	-	-	-	550	1
Total Office Equipment	45,019				16,853	-	4,674	-	32,840	12,179
Total	45,019				16,853	-	4,674	-	32,840	12,179

The accompanying notes form part of these financial statements. These financial statements have not been subject to audit or review, and should be read in conjunction with the attached Compilation Report.

Royal NZ Institute of Horticulture (Inc.) For the year ended 31 December 2013

1. Statement of Accounting Policies

The financial statements presented here are for the entity Royal NZ Institute of Horticulture (Inc.), and is engaged in the business of the furtherance of horticulture and promotion of education.

These financial statements are of special purpose and have been prepared for taxation purposes on the principles contained in the Income Tax Act 2007 and Internal management purposes.

The accounting policies adopted are not in conformity with generally accepted accounting practice. Accordingly, the financial statements should only be relied on for the expressly stated purpose.

2. Measurement Base

The accounting principles recognised as appropriate for the measurement and reporting of earnings and financial position on an historical cost basis have been used, with the exception of certain items for which specific accounting policies have been identified.

3. Changes in Accounting Policies

There have been no changes in Accounting Policies. All policies have been applied on bases consistent with those used in previous years.

4. Fixed Assets and Depreciation

All fixed assets are recorded at cost less accumulated depreciation. Depreciation of the assets has been calculated at the maximum rates permitted by the Income Tax Act 2007.

The entity has the following asset classes:

Office Equipment 14 - 48% DV

5. Goods and Services Tax

These financial statements have been prepared on a GST exclusive basis with the exception of Accounts Receivable and Accounts Payable.

6. Investments

Share investments in listed companies are stated at their fair value. Initially they are recorded at cost and are then valued at market bid price at the Statement of Financial Position date in subsequent periods. Any gains or losses generated as a result of revaluation is recognised in the Statement of Financial Performance. Other investments are stated at cost less any amortisation. Amortisation is recognised in the Statement of Financial Performance.

7. Accounts Receivable

Receivables are stated at their estimated realisable value. Bad debts are written off in the year in which they are identified.

8. Audit

These financial statements have not been audited.

9. Contingent Liabilities

At balance date contingent liabilities have been estimated at nil.

10. Securities and Guarantees

There was no overdraft as at balance date nor was any facility arranged.

The accompanying notes form part of these financial statements. These financial statements have not been subject to audit or review, and should be read in conjunction with the attached Compliance Report.

11. Taxation

No provision for income tax has been made as there is no current or deferred tax payable.

The accompanying notes form part of these financial statements. These financial statements have not been subject to audit or review, and should be read in conjunction with the attached Compliance Report.

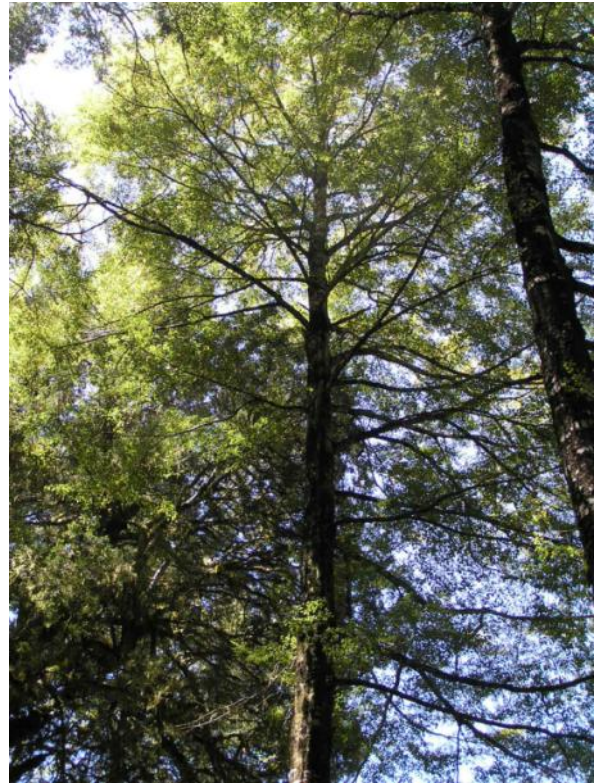
Request from Tane's Tree Trust

A New Zealand-wide classification of outstanding seed-sources to upscale indigenous afforestation

Please contribute to this upcoming project.

Tane's Tree Trust is seeking information from its members, and Nurserymen, Conservationists and Bushmen about the location of stands of high performing native trees with the intention of including these in a nation-wide database. This is part of a project aimed at assessing the availability of high performing seed resource native tree species.

High quality stands of useful native trees cannot easily be located in many of New Zealand's lowland and hill country environments, as original native forest-covered lands were clear-felled, burned, and remnants were marginalised. What fragments remain of indigenous trees and stands in lowlands and hill-country are often of inferior use potential and vitality and could be a contributing factor towards continuing indigenous biodiversity loss.



This beech tree (*Nothofagus truncata*) represents an outstanding seed-source from Kahurangi National Park.
Photo: H. J. Janssen.

In order to improve the quality of native trees grown for productive uses such as timber production or cultural use, we need to know where the best trees are from which to source seed.

The purpose of this project is to encourage hapu and farm-foresters to afforest with native trees from stands of good form and vitality, for lower numbers of better seedlings are less costly to establish and maintain and give earlier and diversified yields long-term! The information generated will enable qualitative comparisons to be made within and between New Zealand's Land Environments for the purpose of identifying potential eco-seeds from quality sources. As with all seed- or propagule collection, permission must be obtained, before propagating seedlings for future native afforestation projects.

We are particularly interested to include in this inventory the seed-sources for native trees used by nurseries and any outstanding examples of puriri, rewarewa, tawa, taraire, titoki, tawari, mangeao, hinau, black maire, kohekohe, kowhai, akeake, rata, the beeches, tanekaha, kauri, totara, rimu, kahikatea, miro and matai.

Please email Mel (office@tanestrees.org.nz) with your description of sites (name and location, preferably with a map reference (or latitude & longitude) of outstanding native trees that ought to be part of this nation-wide quality seed-source inventory.

For further information on the project, sites or stands, proposed project involvement and to cc site descriptions, please contact H. J. Janssen (resourceinfo.mgmt@gmail.com).

New Zealand Notable Trees Trust

RNZIH New Zealand Notable Trees Trust Board

A number of changes have recently taken place on the RNZIH NZNTT Board. Three Trustees are stepping down and we wish to acknowledge their contributions over the years.

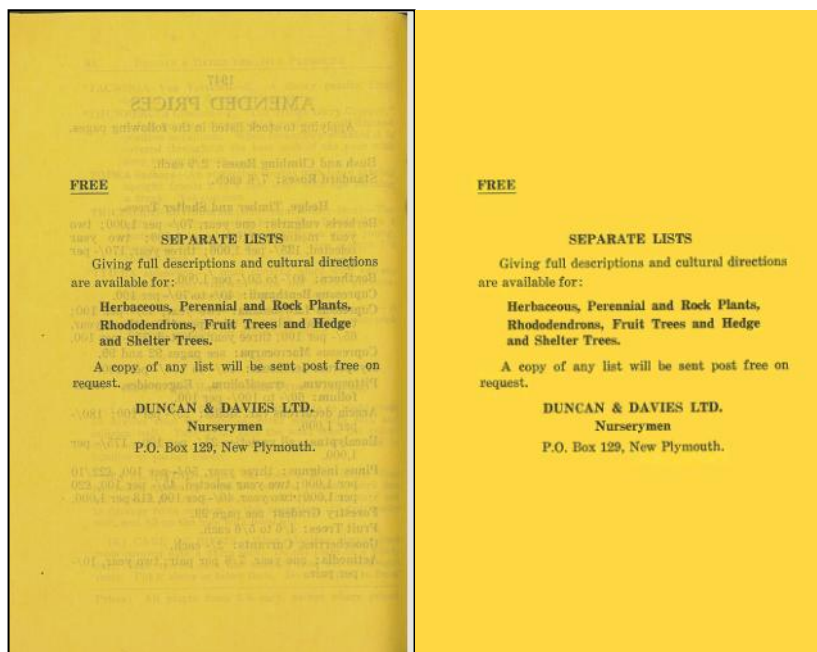
2009 Foundation Trustees David Glenn and Bryan Gould have been with the Trust from the very beginning. Dr Justin Morgenroth joined as Trustee in 2010. All three were instrumental in the early formation of the Trust and pushed and moulded it into the success it has become today.

We thank David, Bryan and Justin for their involvement with the Trust and wish them the best for their future endeavours.

Two new Appointments have been made by the RNZIH. Penny Clifflin and James Jones have joined existing Board members Carl Rogers and Brad Cadwallader. Further appointments are pending from NZArb and advertising for additional Trustees is planned.

New Zealand Plant Collection Register: March 2014 update

After two years, Kathleen Stewart has left the plant collection register project for a full time position with AgResearch. We wish Kath well and sincerely thank her for, among other tasks, conscientiously scanning many thousands of pages and adding numerous plant names into spreadsheets.

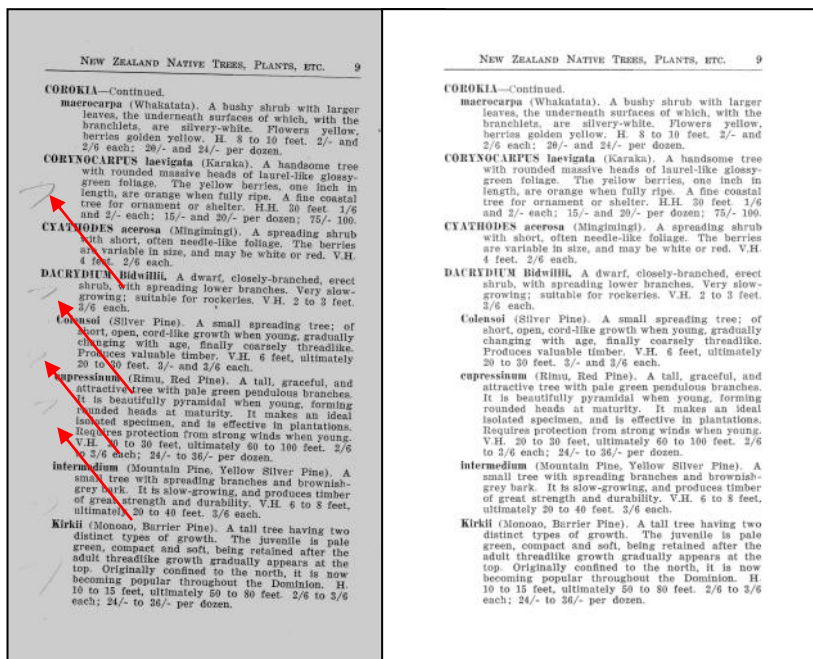


Because the original colour page was thin and transparent, there was extensive bleed-through despite optimising the scanner settings.

Digitally cleaned page with the bleed-through removed. The darker band on the RH (binding) edge has also been erased.

New recruit Jenny Dent and I are moving forward with digitising the Duncan & Davies nursery catalogues that were scanned by Kath. We are getting them into clean pdf format with proof-read text layers. Jenny began this work on the 3rd March 2014, after completing a summer contract in the Allan Herbarium at Landcare Research. Jenny has an Honours degree in Ecology at Lincoln University and will begin her PhD later this year.

The example pages here show some of the corrections required to 'digitally restore' these nursery catalogues to a resemblance of their original printed condition.



This page has scribbles and marks made by a previous owner (arrowed), and is crooked due to scanning opposite pages of a thick catalogue.

The marks have been digitally erased and the page has been straightened to recreate the original layout.

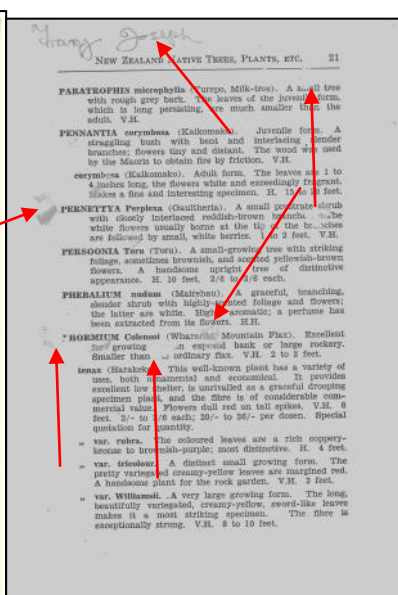
Once we have clean PDF image renditions of the catalogues, we use Optical Character Recognition (OCR) software to generate a text underlay which is carefully checked. This text allows the PDFs to be searchable, rather than images only.

As explained in a previous newsletter, online versions of these catalogues will provide an important garden history resource and provide botanical, cultivar and common names to the Plant Collection Register Project and other resources.

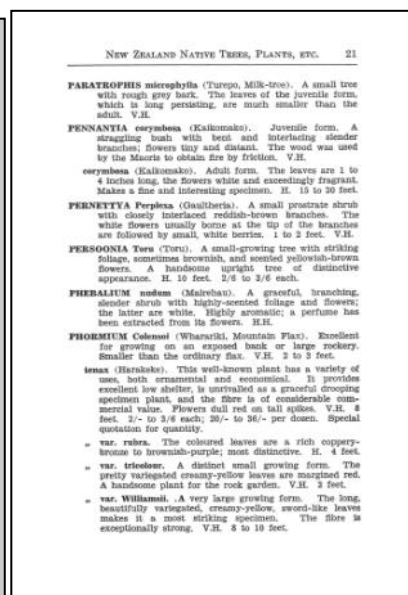
Our continued thanks to TFBIS (the Terrestrial and Freshwater Biodiversity Information Sys-



This page was used by a past owner to press unrelated plant material which obscured much of the text.



After consultation, the plants and tape were carefully removed and the material was remounted on card and kept with the original catalogue.



Final restored page ready for OCR.

tem) for funding the wider plant collection register project, and the Sir Victor Davies Foundation and George Mason Trust for financially supporting the Duncan & Davies co-funded project.

Murray Dawson
New Zealand Plant Collection
Register Project
collections@rnzih.org.nz



ROYAL NEW ZEALAND INSTITUTE OF HORTICULTURE
PO Box 12, Lincoln University, Canterbury, NZ

New Zealand
Permit No. 111

